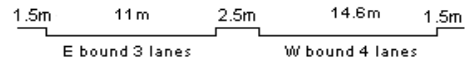
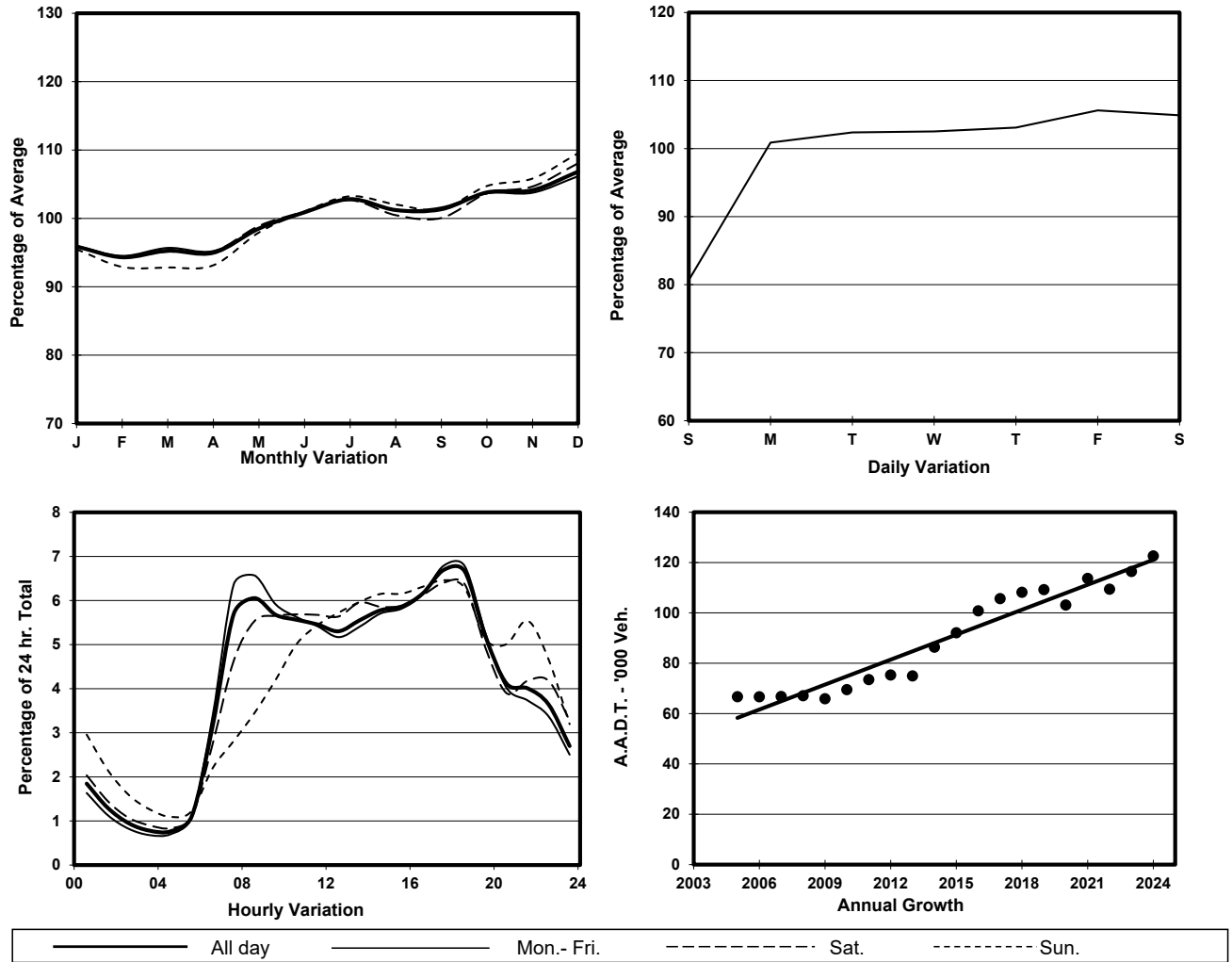


YEAR 2024  
 CORE STATION 5025  
 ROAD NETWORK MAJOR  
 ROAD TYPE EXPRESSWAY

LINK YUEN LONG HIGHWAY (from TIN SHUI WAI WEST INT to LAM TEI INT)



1. TRAFFIC FLOW VARIATION AND GROWTH



2. TRAFFIC CHARACTERISTICS (BY DIRECTION)

Parameter	All - Day	Mon. - Fri.	Sat.	Sun.
<b>EAST BOUND</b>				
A.A.D.T.	62060	64510	65580	50860
R 12 / 24 - %	68.8	70.2	67.9	61.3
R 16 / 24 - %	87.7	88.5	86.6	84.1
AM Peak Hour	0800-0900	0800-0900	0900-1000	0900-1000
One-way flow at AM peak hour	3600	4090	3480	1960
T - % (AM)	-	21.0	-	-
PM Peak Hour	1700-1800	1700-1800	1800-1900	1700-1800
One-way flow at PM peak hour	4240	4470	4260	3360
T - % (PM)	-	15.5	-	-
Prop.of commercial vehicles - 16 hr.	-	20.4	-	-
<b>WEST BOUND</b>				
A.A.D.T.	60540	62990	64610	48740
R 12 / 24 - %	72.1	73.2	70.9	66.8
R 16 / 24 - %	87.1	87.6	86.6	84.6
AM Peak Hour	0800-0900	0700-0800	0900-1000	0900-1000
One-way flow at AM peak hour	3820	4330	3880	2230
T - % (AM)	-	17.1	-	-
PM Peak Hour	1700-1800	1700-1800	1700-1800	1700-1800
One-way flow at PM peak hour	3970	4190	4090	3080
T - % (PM)	-	14.9	-	-
Prop.of commercial vehicles - 16 hr.	-	20.7	-	-

3. OTHER INFORMATION AND COMMENT

**4. Vehicle classification and occupancy - Monday to Friday**

Time		Class of vehicle									
		Motor Cycle	Private Car	Taxi	Private LB	PLB	Goods veh.		Non Fr. Bus	Fr. Bus	
							Light	M & H		SD	DD
0700-0800	Pro	3.0	47.4	9.7	0.6	1.0	18.5	15.8	2.3	0.1	1.7
	Ocp	1.0	1.3	2.2	8.7	14.2	1.4	1.1	8.5	66.0	33.8
0800-0900	Pro	1.5	47.8	7.5	0.6	0.7	20.4	17.7	2.2	0.1	1.5
	Ocp	1.0	1.3	2.1	3.5	17.9	1.3	1.1	8.0	7.0	28.0
0900-1000	Pro	0.8	39.7	9.1	0.6	1.2	23.5	20.7	2.3	0.1	2.1
	Ocp	1.0	1.3	2.1	1.8	16.7	1.3	1.1	13.7	2.0	20.1
1000-1100	Pro	1.1	36.3	9.3	0.6	1.1	24.7	23.3	1.9	0.1	1.7
	Ocp	1.1	1.5	2.2	2.3	13.2	1.3	1.1	19.4	1.0	25.0
1100-1200	Pro	0.8	37.0	9.9	1.0	1.0	24.0	22.9	1.8	0.1	1.6
	Ocp	1.0	1.5	2.2	2.3	14.1	1.3	1.1	22.4	1.0	26.9
1200-1300	Pro	1.2	36.8	8.8	1.1	1.0	23.8	23.5	1.9	0.0	1.8
	Ocp	1.1	1.4	2.2	3.8	9.8	1.3	1.1	15.5	0.0	21.1
1300-1400	Pro	0.9	38.7	9.1	0.7	0.9	23.3	23.5	1.5	0.0	1.4
	Ocp	1.1	1.4	2.0	1.8	12.9	1.4	1.1	9.5	0.0	25.6
1400-1500	Pro	0.7	36.1	10.4	0.3	1.0	26.2	22.0	1.9	0.1	1.4
	Ocp	1.1	1.3	2.1	1.4	13.1	1.3	1.1	14.1	3.0	24.2
1500-1600	Pro	0.9	38.7	10.1	1.1	1.0	23.2	21.6	1.8	0.0	1.5
	Ocp	1.2	1.4	2.2	3.4	12.8	1.4	1.1	19.0	0.0	24.8
1600-1700	Pro	1.7	43.0	7.3	0.8	1.0	23.8	18.6	2.2	0.1	1.7
	Ocp	1.1	1.4	1.9	4.1	17.6	1.3	1.1	13.1	20.5	29.9
1700-1800 Peak hour	Pro	3.0	50.4	8.7	1.1	1.2	20.4	11.7	1.9	0.0	1.6
	Ocp	1.0	1.4	2.2	2.9	18.4	1.3	1.0	14.1	0.0	35.4
1800-1900	Pro	2.7	58.0	8.2	0.5	1.2	15.9	9.8	2.2	0.0	1.5
	Ocp	1.1	1.3	2.1	1.9	18.6	1.3	1.0	13.0	0.0	36.8
1900-2000	Pro	1.5	63.5	10.2	0.2	0.6	12.2	7.1	2.7	0.0	1.9
	Ocp	1.1	1.3	2.0	1.0	16.6	1.3	1.1	6.7	0.0	21.6
2000-2100	Pro	2.3	55.4	13.0	0.1	0.8	13.2	10.6	2.2	0.0	2.5
	Ocp	1.1	1.3	2.1	3.0	14.5	1.2	1.0	13.3	0.0	17.6
2100-2200	Pro	1.8	57.9	14.0	0.1	0.9	12.4	9.8	1.2	0.1	2.0
	Ocp	1.0	1.3	2.0	1.0	15.2	1.2	1.0	14.5	6.0	21.6
2200-2300	Pro	1.5	63.1	14.6	0.0	0.8	10.0	6.9	1.3	0.0	1.8
	Ocp	1.1	1.3	1.9	0.0	16.3	1.2	1.0	9.4	0.0	12.9
16 hours	Pro	1.6	46.4	9.7	0.6	1.0	20.1	16.9	2.0	0.1	1.7
	Ocp	1.1	1.4	2.1	3.1	15.3	1.3	1.1	13.1	10.8	25.4

**Legend: Pro.** Proportion of vehicles in % (Sum may not add up to 100% due to figure rounding)\*

**Ocp.** Average occupancy of vehicles including both driver and passengers\*

**M&H** Medium and Heavy

\* All traffic data are collected from combined bounds